



BURROWING OWL CONSERVATION

A LOCAL BIOLOGIST'S PERSPECTIVE

Marie Barrett



FACTORS INFLUENCING PRESENCE OF BUOW IN IMPERIAL VALLEY

- Water delivery methods, ditch construction and maintenance practices – Bartok and Conway 2010
- Management of the irrigation system - Rosenberg and Haley (2004)
- Availability of suitable burrowing sites – Columbe 1971

CONSERVATION

- Preservation, protection, or restoration of the natural environment, natural ecosystems, vegetation, and wildlife.



HAZARDS OBSERVED IN FIELD

Vehicles



Debris



HAZARDS (cont)

- GRADING



- EROSION



HAZARDS (cont)

- CONSTRUCTION

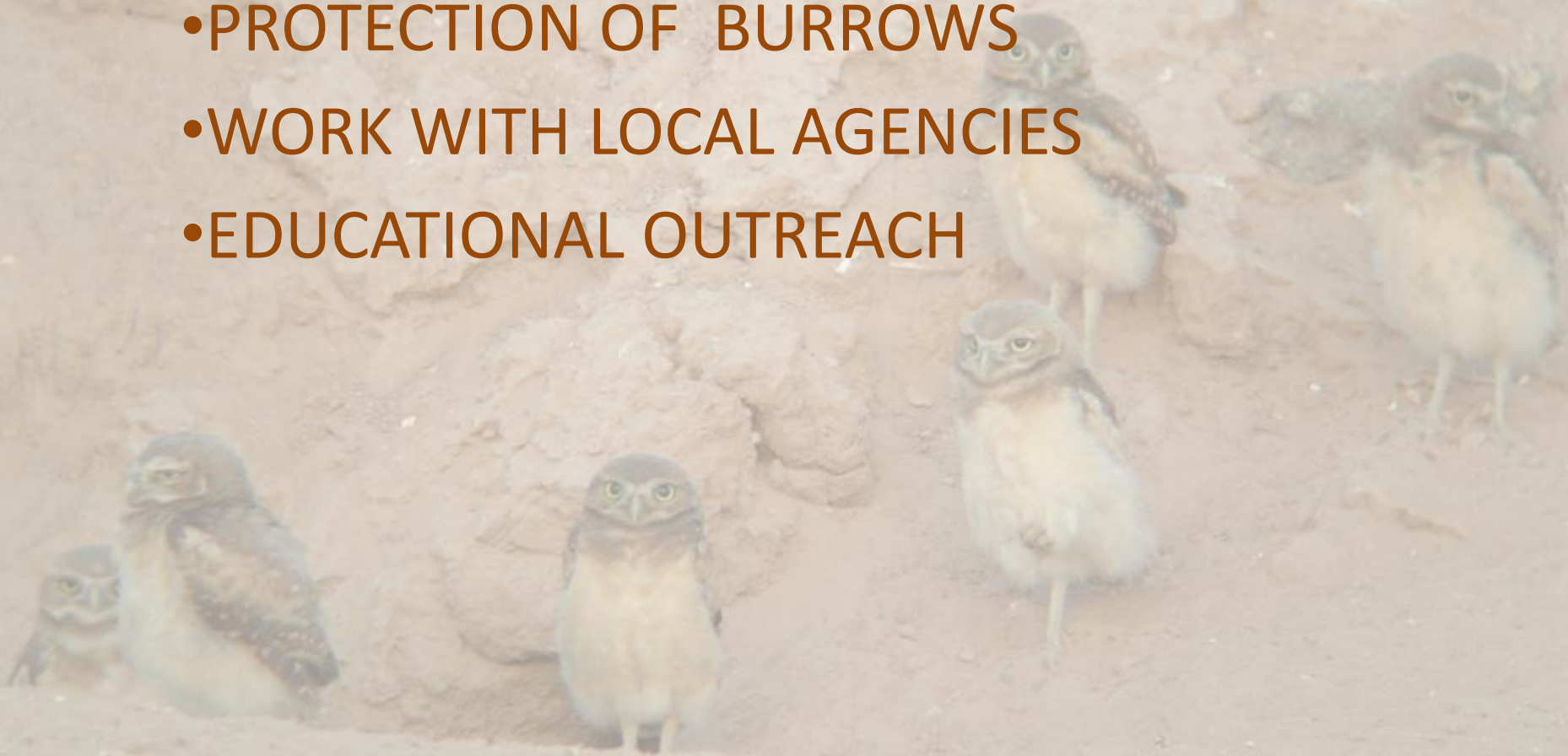


- OTHERS



LOCAL CONSERVATION PRACTICES

- PROTECTION OF BURROWS
- WORK WITH LOCAL AGENCIES
- EDUCATIONAL OUTREACH



PROTECTION OF BURROWS

- Shelter natural burrows



ARTIFICIAL BURROWS



SIGNAGE



LOCAL AGENCIES

IMPERIAL COUNTY PUBLIC WORKS

- AT RISK BURROW

CLOSURE AFTER NESTING
SEASON



EDUCATIONAL OUTREACH

- WEAP
- PUBLIC SERVICE
OUTREACH

Rotary/Optimists/Kiwanas

All Workers who work in
BUOW areas receive
training with wallet
cards



SCHOOL OUTREACH



- Tours, class room presentations, career days



WISH LIST LOCAL

- INSTALL ARTIFICIAL BURROWS

FENCED PUBLIC AREAS

HOA PROTECTIONS

AGRICULTURAL AREAS

PROTECTED RIGHT OF WAY AREAS

WISH LIST

- NO MORE WATER TRANSFERS
 - ANY WATER REMOVED FROM FARMING AFFECTS HABITAT
 - MONITOR SAN DIEGO/LA COUNTY DEVELOPMENT
- CONSERVATION EASEMENTS
- ACTION

WISH LIST (CONT)

- REHAB CENTER LOCATED IN IMPERIAL VALLEY



THANK YOU

QUESTIONS

